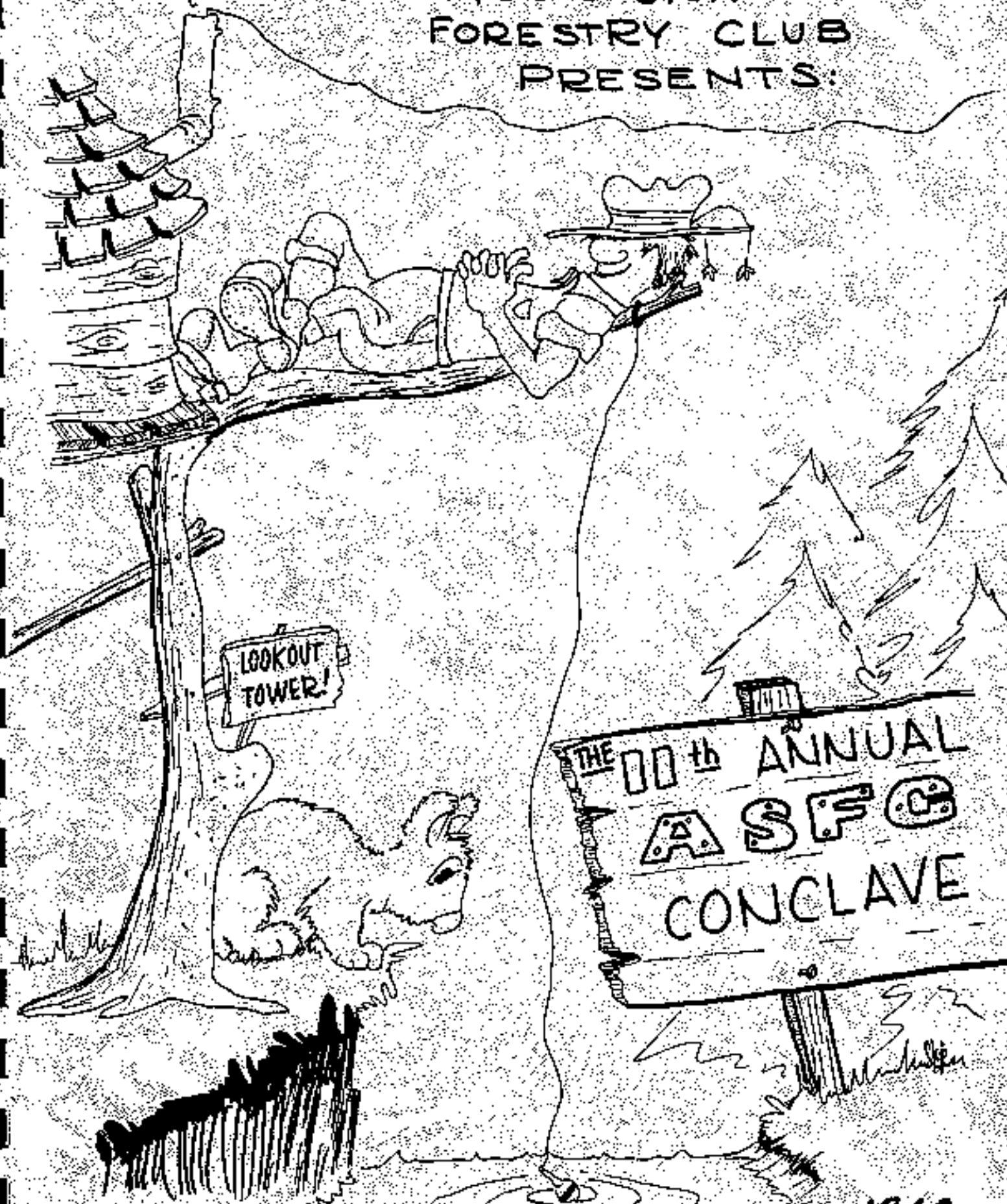


THE CLEMSON UNIVERSITY  
FORESTRY CLUB  
PRESENTS:



LOOKOUT  
TOWER!

THE 11th ANNUAL  
ASFC  
CONCLAVE

1968



THE CLEMSON FORESTRY CLUB

P  
R  
E  
S  
E  
N  
T  
S

EDITOR . . . . . Jim Creech

PHOTOGRAPHER, ART & DESIGN . . Skip Carlson

**THE**  
**SOUTHERN**  
**FORESTER**  
**FOR**  
**1968**

Financial Report . . . . .	1
ASFC Officers . . . . .	3
The President Speaks . . . . .	3
Conclave Events . . . . .	4-8
Final Standings . . . . .	8
Pictures of the Clubs . . . . .	11-15
Articles of the Clubs . . . . .	16-20
Business Meeting . . . . .	22
Constitution . . . . .	23-28

### FINANCIAL REPORT

#### Expense

Food . . . . .	\$1,325.70
Insurance . . . . .	216.00
Trophies . . . . .	170.95
Postage . . . . .	6.18
Building Rental . . . . .	10.00
Miscellaneous . . . . .	24.08
Stolen Articles	
Life Preservers: 4 @ \$15.00 . . . . .	61.80
Material Stolen and/or Damaged . . . . .	12.50
SOUTHERN FORESTER . . . . .	387.17
TOTAL . . . . .	\$2,214.38

#### Income

ASFC Membership Dues . . . . .	835.00
Registration . . . . .	1,138.00
Work . . . . .	241.38
TOTAL . . . . .	\$2,214.38

R. J. Counts  
Treasurer, ASFC

1967-1968 OFFICERS OF THE ASSOCIATION OF  
SOUTHERN FORESTRY CLUBS

Dale Martin----- President  
Gerald Brockenfelt ----- Vice-President  
William Coleman----- Secretary  
Robert Counts ----- Treasurer  
James Creech ----- Editor

THE PRESIDENT SPEAKS

It's all over! I must say this with a sigh of relief. Although the hostship of the conclave was an experience that we at Clemson were happy to have, I feel that each of us is just as happy to know that we will only be participants next year.

We began our plans in August, 1967. Our prime objective during the first semester was to increase our bank account. The two areas concerned here were firewood sales and cutting pulpwood practically every Saturday.

In January, with March 30th rapidly approaching, we began making more definite plans for the conclave itself. Committees were assigned to specific jobs. I must add that each did a "top notch" job of its assignment. Actually the committee chairman and their members did the real work.

Great assistance was given by Dr. Shain of our Department of Forestry. His familiarity with the things to be done was very valuable to our club.

The thing that really provides for a successful conclave is the fellowship among the many forestry students attending. Also a competitive, but yet a sporting spirit, is important. I feel that each of these were achieved.

Thanks to each of you for contributing your share in the success of this conclave.

Dale Martin  
President, ASFC

## CONCLAVE EVENTS

### CHAIN THROWING

School	Contestant	Time	Place
S. F. Austin	Hawley	51.8 sec.	1
Oklahoma	Gund	1 min. 10.8 sec.	2
Arkansas	West	1 min. 11.8 sec.	3
Auburn	Prince	1 min. 17.15 sec.	4
N. C. State	Noll	1 min. 18.45 sec.	5
Clemson	Koch	1 min. 19.8 sec.	6
Tennessee	Weber	1 min. 30.1 sec.	7
Georgia	Edmonds	1 min. 58.6 sec.	8
Florida	Hurt	2 min. 29.1 sec.	9
VPI	Moody	2 min. 59.0 sec.	10



### CROSS-CUT SAWING

School	Contestant	Time	Place
N. C. State	Folke-Launieb	15.3 sec.	1
Arkansas	Dishough-Bronchlow	21.0 sec.	2
S. F. Austin	Snow-Runte	25.2 sec.	3
Clemson	Carlson-Kostyrk	29.5 sec.	4
Oklahoma	Tharp-Franklin	37.8 sec.	5
Georgia	Gordon-San Fratello	42.5 sec.	6
Auburn	Simmons-Wilkins	44.1 sec.	7
Tennessee	Williams-Snyder	47.4 sec.	8
VPI	Gardner-Figoux	53.4 sec.	9
Florida	Hurt-Eskert	72.2 sec.	10

### KNIFE THROWING

School	Points	Place
Arkansas	10	1
N. C. State	9	2
S. F. Austin	8	3
Auburn	7	4
Florida	5	
Oklahoma	5	
Tennessee	5	
Clemson	3	0
VPI	1.5	
Georgia	1.5	



## CONCLAVE EVENTS



### AXE THROWING

School	Contestant	Points	Place
Oklahoma	Swords	10	1
Georgia	Bislock	9	2
Arkansas	Dufford	8	3
N. C. State	Coffin	7	4
Auburn	Jaggers	6	5
Florida	Barneclough	5	6
Tennessee	Boyd	4	7
VPI	Carico	3	8
Clemson	Reider	2	9
S. F. Austin	Thigpen	1	10

### SAIT CASTING

School	Contestant	Points	Place
Auburn	Ziebach	10	1
Georgia	San Fratello	9	2
VPI	Casley	8	3
Tennessee	Oliver	7	4
Oklahoma	Baker	5.6	
S. F. Austin	Jackson	5.5	
Arkansas	Martin	2.5	
Clemson	Tompkins	2.5	
Florida	Cole	2.5	
N. C. State	Btendingheiser	2.5	



### BOW SAWING

School	Contestant	Time	Place
Arkansas	Sitton	14.6 sec.	1
Oklahoma	Moorman	19.4 sec.	2
Auburn	Tarleton	20.3 sec.	3
N. C. State	Laubisch	22.9 sec.	4
S. F. Austin	Hill	25.6 sec.	5
Clemson	Carlson	26.0 sec.	6
Florida	Eckert	27.4 sec.	7
Georgia	Burbans	32.9 sec.	8
Tennessee	Millex	48.7 sec.	9
VPI	Olah	66.9 sec.	10



## CONCLAVE EVENTS

### LOG BURLING

School	Contestant	Place
Arkansas	Hawkins	1
VPI	Olah	2
Georgia	Phillips	3
Oklahoma	Moseman	4
N. C. State	Coffin	5
Florida	Carter	
Georgia	Allford	
Tennessee	Edwards	
S. F. Austin	Storey	
Auburn	Gumbie	

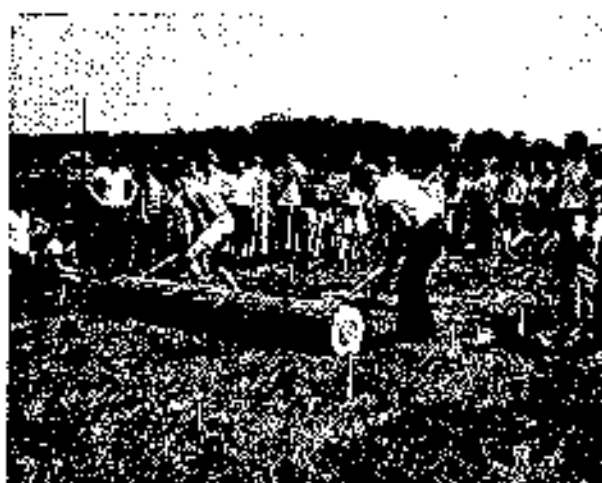


### LOG CUTTING

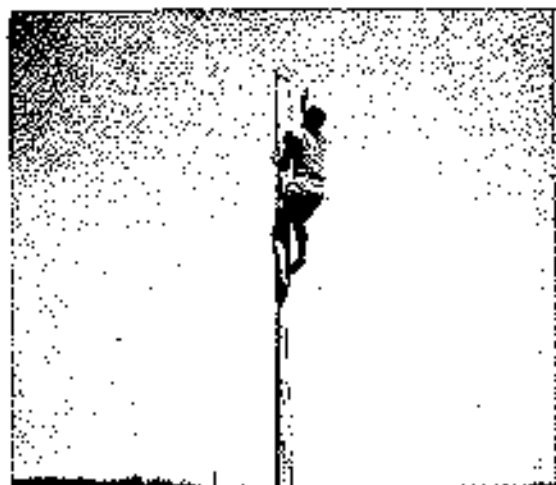
School	Contestant	Time	Place
N. C. State	Folk	3 min. 00.2 sec.	1
Oklahoma	Tharp	3 min. 19.2 sec.	2
Arkansas	Sutton	3 min. 44.7 sec.	3
S. F. Austin	Snow	5 min. 03.4 sec.	4
VPI	Nemore	5 min. 57.8 sec.	5
Clemson	Carlson	6 min. 25.0 sec.	6
Tennessee	Snyder	8 min. 03.0 sec.	7
Georgia	Burhan	8 min. 13.0 sec.	8
Florida	Reisner	9 min. 25.0 sec.	9
Auburn	Sneed	-----	10

### LOG ROLLING

School	Contestants	Time	Place
Georgia	Blalock-Burhan	1 min. 13.7 sec.	1
Auburn	Beasley-Welker	1 min. 37.0 sec.	2
N. C. State	Lymbush-Glover	2 min. 54.15 sec.	3
Oklahoma	Moorman-Baker	1 min. 54.9 sec.	4
S. F. Austin	Jaynes-Fraut	1 min. 56.35 sec.	5
Tennessee	Lee-Evans	1 min. 58.1 sec.	6
VPI	McGinley-Woodson	2 min. 09.5 sec.	7
Arkansas	Owen-Sutton	2 min. 10.3 sec.	8
Florida	Dann-Carr	3 min. 27.2 sec.	9
Clemson	Koch-Kuetyra	3 min. 38.5 sec.	10



## CONCLAVE EVENTS

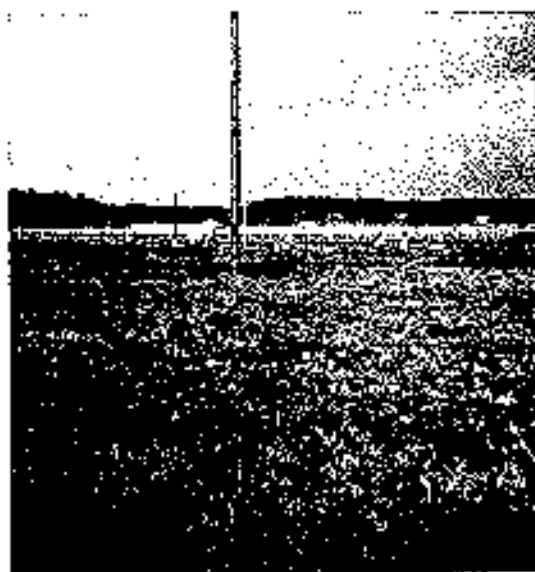


### POLE CLIMBING

School	Contestant	Time	Place
Clemson	Kostyra	5.0 sec.	1
Georgia	Brown	5.1 sec.	2
Auburn	Snod	5.5 sec.	3
S. F. Austin	Thigpen	5.6 sec.	4
Arkansas	Crawford	6.1 sec.	5
N. C. State	Stephens	6.5 sec.	6
Florida	Poole	9.6 sec.	
Oklahoma	Lawson	9.6 sec.	
VPI	Webster	11.5 sec.	9
Tennessee	Reagen	13.75 sec.	10

### POLE FELLING

School	Contestant	Place
Auburn	Culeman	1
S. F. Austin	Walley	2
Oklahoma	Tharp	3
Arkansas	Dishongh	4
N. C. State	Rodgers	5
Tennessee	Dill	6
Georgia	Burbans	7
Clemson	Phillips	8
VPI	Thompson	9
Florida	Dees	10



### WOOD TECHNOLOGY

School	Contestant	Points	Place
Tennessee	Smith	25.0	1
Clemson	Tompkins	13.5	2
Arkansas	Brumbelow	12.0	3
S. F. Austin	Lankford	10.5	4
Oklahoma	Coughlin	9.0	5
N. C. State	Folk	6.75	
VPI	Beale	6.75	
Georgia	Evers	4.5	8
Auburn	Lambert	3.0	9
Florida	Wright	1.5	10

## CONCLAVE EVENTS

### DENDROLOGY

School	Contestant	Place
Tennessee	Campbell	1
Auburn	Fields	2
Arkansas	Green	3
S. F. Austin	Hall	4
N. C. State	Schmidt	5
Clemson	Wiley	6
Florida	Smith	7
Oklahoma	Gund	8
Georgia	Scronce	9
VPI	Meador	10

### TIMBER ESTIMATION

School	Contestant	Estimate	Place
Georgia	Evers	5,132	1
Florida	Van Locke	4,564	2
Oklahoma	McKinley	4,285	3
Tennessee	Rochelle	5,575	4
Arkansas	Dishongh	3,896	5
N. C. State	Wade	6,075	6
S. F. Austin	Hawley	3,310	7
Clemson	Leonard	3,270	8
VPI	Moody	2,297	9
Auburn	Wilkins	9,272	10
True Volume			4,910

### D. B. H. ESTIMATION

School	Contestant	Place
Arkansas	Crowson	1
Auburn	Bowers	2
S. F. Austin	Storer	3
Oklahoma	Whaley	4
VPI	Kemper	5
N. C. State	Liles	6
Tennessee	Reagan	7
Clemson	Tompkins	8
Georgia	Fall	9
Florida	Strickland	10

### POLE CLASSIFICATION

School	Contestant	Place
Georgia	Ferry	1
Auburn	Fell	2
Arkansas	Borden	3
Tennessee	Edwards	4
Oklahoma	McCord	5
S. F. Austin	Sandeen	6
Clemson	Barfield	7
N. C. State	Dozier	8
Florida	Back	9
VPI	Jenks	10

### COMPASS AND PACING

School	Contestant	Place
VPI	Kemper	1
Georgia	Sujecki	2
N. C. State	Hausknecht	3
S. F. Austin	Hawley	4
Auburn	Snead	5
Arkansas	West	6
Clemson	Barfield	7
Tennessee	Wolcott	8
Florida	Taylor	9
Oklahoma	Fischer	10

### FINAL STANDINGS

School	Place
Arkansas	1
S. F. Austin	2
Oklahoma	3
Auburn	4
N. C. State	5
Georgia	6
Tennessee	7
Clemson	8
VPI	9
Florida	10

# CONCLAVE SNAPSHOTS

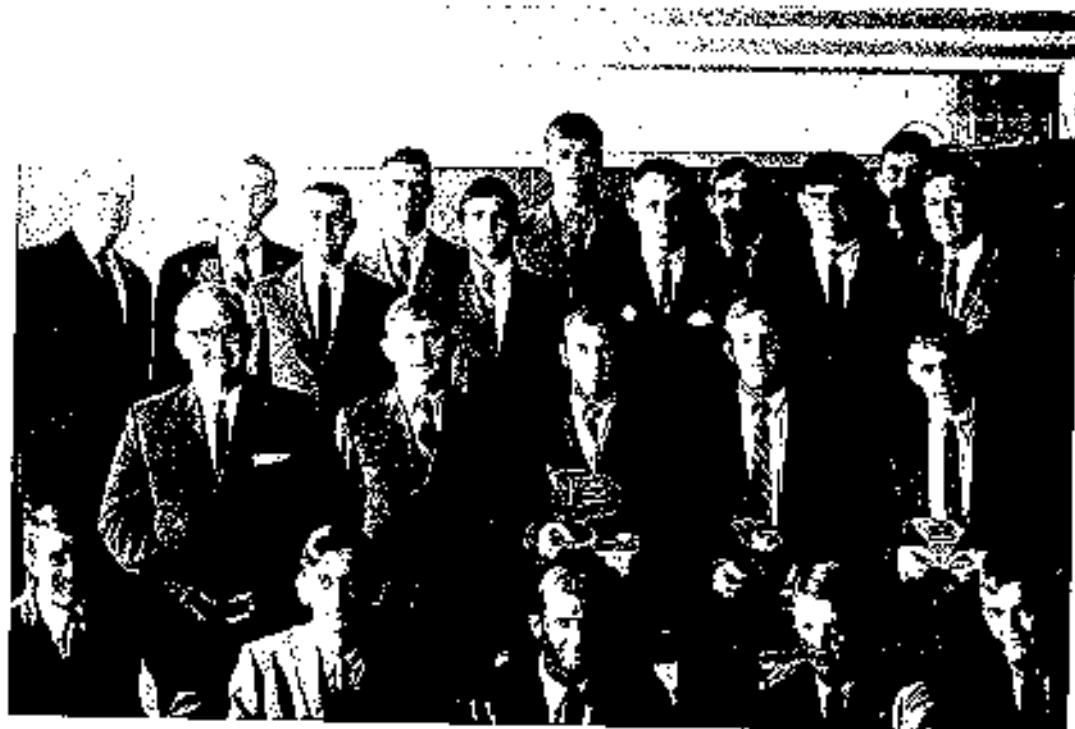


CONCLAVE SNAPSHOTS





THE ARKANSAS A & M FORESTRY CLUB



THE AUBURN FORESTRY CLUB



THE CLEMSON UNIVERSITY FORESTRY CLUB



THE UNIVERSITY OF FLORIDA FORESTRY CLUB



THE UNIVERSITY OF GEORGIA FORESTRY CLUB



THE NORTH CAROLINA STATE FORESTRY CLUB



THE OKLAHOMA STATE FORESTRY CLUB



THE SYLVANS CLUB  
Stephen F. Austin State College



THE UNIVERSITY OF TENNESSEE FORESTRY CLUB



THE VPI FORESTRY CLUB

## THE ARKANSAS A&M FORESTRY CLUB

by Clifton S. Crawford

The Arkansas A&M Forestry Club is one of the largest and most active organizations on the campus. The club participates in the intramural sports program, and is among the top teams this year. The Homecoming float sponsored by the club won second place in the organizations division.

This year's fund raising programs consist of selling programs at all home football games and handling the concession stands at the Student Government Association sponsored dances.

The club holds bimonthly meetings, which consist of business sessions, and special programs of outdoor films and guest speakers. The guest speakers this year have been the Supervisor of the Ouichita National Forest, representatives of Dierks Forest Incorporated, MacMillan Bloedel Products Incorporated, the Federal Land Bank, and the Texas Forest Service.

The club sponsors two scholarship awards and one leadership award which are presented at the annual Forestry Club Banquet.

## THE AUBURN FORESTRY CLUB

by A. H. Coleman

Our club has come to play an important role in the lives of the forestry students at Auburn University. It has a place for any student who wishes to participate.

To give you some idea of what our club is like, let us review the events and programs of this past year. In addition to biweekly meetings where speakers and films are presented, we have sponsored several projects. The fall quarter welcome meeting for new students served to begin the year. We sold programs at Auburn University football games, and discovered a gold mine in production of a small curio called "Natty Wareagle." The first of December brought the "Woodchopper's Ball," a cabin party on the Chattahoochee River. Winter quarter was devoted to conclave practice. The annual Forestry Club Banquet was held at the end of February, followed by a field day.

Aside from these routine activities, we have been quietly preparing to host the 12th A. S. F. C. Conclave on campus here in Auburn. I can promise you that this will be a fine event. We look forward to seeing all of you at Auburn in 1969.

## THE CLEMSON UNIVERSITY FORESTRY CLUB

by Larry S. Walker

The Clemson University Forestry Club has had a very rewarding year. We have all benefited from our endeavors to host the conclave. The conclave was a team project, and even though it caused a lot of hardships, it brought out a lot of smiles and satisfaction, also.

Our club members enjoyed the cookouts, initiations, and intramural sports during the year. This has really been an event-filled year for us; not to mention our studies.

We wish to express our sincere thanks to all participants and spectators at the conclave for their cooperation. Also, we would like to wish a hearty "good luck" to Auburn in their preparations for next year's conclave. I am sure that it will be a good one.

## THE UNIVERSITY OF FLORIDA FORESTRY CLUB

The University of Florida School of Forestry, is by enrollment, the smallest college on a campus of over 19,000 students. Because of this, we enjoy a strong, sincere comradeship and fellowship among faculty, staff, and students. Particularly strong is the ambitious fellowship of our Forestry Club, which out of the many clubs and organizations on the campus, has won the Most Active Club Award the past two years.

Things have really been hoppin' in Gatorland since the University of Florida started the quarter system last fall. In spite of the pressures of this new system, our club's membership increased by one-half over the past year. Our two main financial endeavors, the annual pulpwood cut and Christmas tree sale, were highly successful, and our winter quarter budget alone was almost equal to the total budget of the previous year.

In past years, Florida's conclave team averaged about five to seven members. This year, we showed poorly (point wise), at Clemson, but the 28 members who attended had a first-hand look at what prime organization and thorough planning can do to make a winning team. We didn't bring home a trophy, but what we learned will enable us to plan ahead considerably and be well prepared for Auburn in 1969.

## THE UNIVERSITY OF GEORGIA FORESTRY CLUB

by Larry D. Evers

The Forestry Club of the University of Georgia objectives are to promote interest in forestry and related fields, broaden the knowledge of club members and strive to establish a feeling of brotherhood and friendship among our fellow students. During this past year we feel we have accomplished this goal.

The many activities of our club include: initiation in Fall and Spring quarters, the Lumberjack Ball in Winter quarter, the eliminations for the Conclave in Winter quarter, the Annual Spring Banquet and the award for the top Natural Resource entry in the Georgia State Science Fair is given jointly with the Xi Sigma Pi honorary fraternity. The Forestry Club is also responsible for the annual Forestry School yearbook, "The Cypress Knee."

## THE NORTH CAROLINA STATE FORESTRY CLUB

by Lawrence D. Montee

The Forestry Club at North Carolina State University dates back to 1929 with the birth of the School of Forestry under the direction of Dr. J. V. Hofmann. In its 39th year, the club continues to offer opportunities for leadership development, practical forest management, and fellowship for students in the fast growing School of Forest Resources.

The 50 active members carry a balanced program of continuous fund-raising projects, bi-weekly club meetings, and periodic social events. Winter firewood operations and pulpwood from thinning operations in the nearby Carl Alvin Schenck Forest, one of several University forest holdings, are the club's most successful sources of revenue.

Club meetings combine informative presentations with leadership training in everything from the planning of the "Loggers' Brawl," an annual spring dance, to organizing the "Finetum," a journal on the School of Forest Resources published by the club.

The Forestry Club participates in various campus activities in addition to club productions such as the annual fall "Rolleo" held at the Hill Forest near Durham, North Carolina, another school forest holding.

Thus the Forestry Club offers the forestry student at North Carolina State University a center for wholesome fun, meaningful fellowship, and leadership training.

## THE OKLAHOMA STATE FORESTRY CLUB

The Oklahoma State University Forestry Club was first established in 1947, and since then has grown to the present membership of seventy-two. Our present department head is Dr. Edward E. Sturgeon, who is a native of Michigan. He is currently in his second year as department head. The club advisor is Mr. Ted Silker, who hails from the state of Iowa. Mr. Silker is in his third year as Club advisor.

The Forestry Club of Oklahoma State University started the school year 1967-68 with one main objective--to be awarded the Agriculture Council Outstanding Club Award, which we won in school years 1964-65 and 1966-67. As activities on campus and around Stillwater, the Club participated in the Homecoming festivities by erecting a giant forty-foot image of "Smokey." In the month of October, we participated in our annual "Log Jam" picnic, where all the guys got to personally meet and talk to all of the candidates for the Forestry Club Queen. After going through a series of preliminary activities, we elected Miss Judy Chandler, Oklahoma City junior, as our Queen.

The Club was involved with firewood cutting and Christmas tree sales during the first semester. The money derived from these sales was used to sponsor Club activities. Also, on one cold, dreary Oklahoma day, an aggregation of some thirty Club members journeyed west of Stillwater and helped a troop of Girl Scouts plant about twenty-five acres in pine, cedar, and cottonwood.

The second semester was devoted mainly to getting ready for this year's Conclave. We had five run-off days in Conclave events which led up to our final "21st Annual Field Day" which was held on campus March 16. That night we had our Forestry Club Banquet with a lot of good food, lots of awards, and a dance with a lot of pretty girls.

Intramural sports also took up a lot of time and energy for the Forestry Club. We participated in football, tennis, basketball, wrestling, volleyball and softball. In overall point standings for all intramural sports the Forestry Club finished fourth in the club division.

## THE VPI FORESTRY CLUB

The Virginia Tech Forestry Club was founded in 1948 with the stated objective of providing a common meeting ground for students, faculty, and prominent persons in the field of renewable natural resources. Accreditation by the Society of American Foresters and being the largest single school in the College of Agriculture, the VPI School of Forestry offers a strong, well-rounded technical educational opportunity for students. It is the Forestry Club which takes upon itself the responsibility to provide supplemental educational and recreational opportunities for the undergraduate enrollment of the School of Forestry.

The membership has, under the guidance of the club's advisor, Dr. Robert E. Martin and its officers, worked this year to revise the club's constitution to meet the growth and progress which has taken place at Virginia Tech during the past few years. The programs of the past year have attempted to stimulate thought on the part of members as to the future of the nation's natural resources and their place in this field.

## THE SYLVANS CLUB

The Sylvans Club at Stephen F. Austin State College was organized in the fall of 1946. The club was organized for the purpose of furthering and promoting fellowship among forestry students and to increase their knowledge by having programs highlighting speakers well versed in the many phases of forestry. The club has grown from a modest beginning to one of the outstanding and active social and professional clubs on campus. It has an active membership of 80 members and one faculty advisor.

The Sylvans Club sponsors many annual events such as a forestry field day, hunting and fishing trip, Christmas Dance, Spring Banquet, Sylvan's scholarship, and publishes the Texas Tally Forestry Annual.

The Sylvans Club has been an active participant in intramural sports. The Sylvans have also taken an active part in the promoting of school spirit and sponsors a Duchess and float in the homecoming parade, winning second place for the last three years.

Two years ago, 20 acres of private forest land was set aside for the club's use in research and social activities. Recently, a log cabin was completed on the site for use of club members. The site is also being considered for the construction of a small lake.

# THE UNIVERSITY OF TENNESSEE FORESTRY CLUB

by Charlie Williams

The past year has witnessed phenomenal growth in the Department of Forestry at UT. This fall we moved into a new building complete with laboratories for courses in mensuration, wood technology, and dendrology. An expanded enrollment in the forestry curriculum has made the department the largest in the College of Agriculture.

With expanding size, comes the problem of making personal contact among students and between students and staff easier and more meaningful. The UT Forestry Club has assumed the responsibility for solving this problem its primary task.

With the aid of our three advisors, Dr. Derry Schell, Dr. Ray Wells, and Dr. Hal Core, we feel that the club has done much in contributing to both the forestry curriculum and the social welfare of forestry students. Bimonthly meetings featuring guest speakers who are practicing in the profession of forestry aid the students in achieving an overall view of the profession and contribute to the students' awareness of what is happening in the field of forestry throughout the country.

Social activities such as the annual fall field day and intramural football have brought many of the students in contact with one another and with the forestry staff. With personal contact comes the free exchange of ideas that makes the educational experience meaningful and worthwhile.

The officers and members of the UT Forestry Club feel that the club has been very successful in attaining its objectives and will continue in the future to become increasingly important in making the forestry curriculum at UT one of the best in the country.

MINUTES OF THE BUSINESS MEETING ELEVENTH ANNUAL CONCLAVE  
OF THE  
ASSOCIATION OF SOUTHERN FORESTRY CLUBS

March 30, 1968

Clemson, South Carolina

At 9:30 P.M., Saturday, March 30, 1968, the meeting of team captains was called to order by ASFC President Dale Martin. All members were present.

President Martin opened the floor for business. The possibility of adding a new technical event, forest entomology, was brought up and discussed. After some time, a motion was made to add the event and recorded. The motion was defeated, however, and the event not added.

Next there was discussion on the possibility of adding an event concerning wildlife. A motion was made to add the event, but was defeated.

Changes were made or memoranda to the host club were proposed in the following events:

**CHAIN THROWING** - After lengthy discussion of the present rules, particularly the part concerning where the starting point is and how the chain should be "fully laid out," Florida moved that there should be a minimum distance for the starting point to be from the finish. There should be a 75-foot minimum distance between the starting point and the finish. This starting point should be marked. The motion was recorded and voted upon. The vote resulted in a tie, but President Dale Martin voted for the motion, and it passed. Another motion was made to change part seven of the chain throwing rules from reading "chain fully laid out" to "chain laid out." The motion was recorded, but was defeated. A motion was made stating that the contestant would start 75 feet from the finish point and begin retrieving the chain within 5 feet of the finish point with the trailer or end of the tape over the 75-foot mark. This motion was defeated.

**POLE CLASSIFICATION** - Attention was called to the fact that better specifications for poles were needed.

**LOG CHOPPING** - A motion was made to assess a 5-second penalty for each chop made ahead of the starting signal. The motion was seconded and passed.

**BAIT CASTING** - A motion was made to elevate the back of the target 12 inches and to paint the target with a non-reflective paint that can be easily seen. A motion to amend the previous motion by changing the elevated distance from 12 inches to 6 inches was made, recorded and passed. The amended motion was then seconded and passed.

After discussion of rule changes was completed, Auburn introduced the new ASFC officers and announced that tentative plans for next year's 12th Annual Conclave had been made. The second or third week in April was a suggested date.

The meeting was adjourned at 11:15 P.M.

William G. Coleman  
Secretary, ASFC

## CONSTITUTION OF THE ASSOCIATION OF SOUTHERN FORESTRY CLUBS

As amended April 8, 1967 at the  
Tenth Annual Conclave

### Article I. Name.

The name of the organization shall be the Association of Southern Forestry Clubs.

### Article II. Objectives.

- A. To benefit the forestry clubs of the various southern schools by an interchange of ideas and stimulation of good fellowship among the club members.
- B. To establish and maintain:
  1. Unity of purpose and action within and among the southern forestry clubs.
  2. A high standard of professional ethics.
  3. Closer cooperation and relationship between students and professional foresters.
- C. To hold an annual conclave.

### Article III. Membership.

#### A. Qualifications.

1. Any forestry club of a university or college of Alabama, Arkansas, Florida, Georgia, Kentucky, Louisiana, Mississippi, North Carolina, Oklahoma, South Carolina, Tennessee, Texas, Virginia, or West Virginia granting a baccalaureate degree in forestry, or equivalent, with a major of forestry, or a higher degree in forestry, shall be eligible for a voting membership in this association upon a majority approval of a petition submitted to the voting member clubs; or by application by representation at the Annual Conclave.

2. Charter Members: Louisiana State University, University of Florida, Stephen F. Austin State College, Mississippi State University, Arkansas A & M College, University of the South, Auburn University, Oklahoma State University, University of Georgia, North Carolina State College, and Clemson Agricultural College.
  3. Any Forestry Club of a senior university or college within the states listed in Part 1 of this section not granting a baccalaureate degree in forestry, shall be eligible for associate membership upon a majority approval of a petition submitted to the voting member clubs.
- B. Privileges.
- Members (each club) are entitled to one vote and full participation in all conclave activities.
- C. Dues.
1. The Annual dues shall be one hundred (\$100) dollars for each member club. Entering clubs shall pay a reduced rate to be set by the Association.
  2. The dues shall be used to pay for correspondence, publications, and other association expenses of the host club and any excess funds may be the host club's.
  3. The dues for the year will be paid to the host school by January 1, preceding the Conclave.

#### Article IV. Officers.

- A. The officers of the association shall be:
1. President - elected from and by the host club.
  2. Vice-President - one elected from any by each member club.
  3. Secretary - elected from and by the host club.
  4. Treasurer - elected from and by the host club.
  5. Editor - elected from and by the host club.
- B. The Duties of the Officers.
1. The duties of the President shall be:
    - a. To preside at all meetings of the association.
    - b. To appoint committees.
    - c. To be responsible for submitting an officers report to the accumulative files upon the completion of ASFC Conclave.
    - d. To be responsible for obtaining reports from each of his committees and officer heads of the host club.
    - e. To perform all other duties necessary.
  2. The duties of the Vice-President shall be:
    - a. To act as a representative of his club.
    - b. To notify the president of his election.
    - c. To complete a report of the activities of the association, and be responsible for submitting materials to the host club for annual publication.
    - d. To be responsible for submitting to member clubs publications within his club and maintaining an accumulative file of ASFC correspondence.

3. The duties of the Secretary shall be:
    - a. To keep the minutes of all meetings of the association and to conduct all correspondence relative to the business of the association.
    - b. To submit an officer's report for the accumulative files, completion of the ASFC Conclave.
  4. The duties of the Treasurer shall be:
    - a. To receive and have custody of all money paid to the association.
    - b. To keep a careful record of all receipts and expenditures.
    - c. To prepare a financial report for publication in the annual issue of "THE SOUTHERN FORESTER."
    - d. To be responsible for the collection of dues.
  5. The duties of the Editor shall be:
    - a. To gather and edit all material for the annual publication, "THE SOUTHERN FORESTER."
    - b. To see that the provisions of Article VII are carried out.
- C. Tenure of Office.  
Officers are to hold office until the next Annual Conclave with the exception of the editor, who will serve until the publication is distributed.
- D. Election of Officers.
1. The President, Secretary, Treasurer, and Editor of the Association shall be elected by the host club at their first club meeting following the Conclave.
  2. Vice-Presidents of the Association shall be elected by their respective clubs at their first meeting following the Conclave.

#### Article V. Meetings.

- A. Time of meetings.
1. Meetings shall be during the annual spring Conclave on the last night of the Conclave.
  2. The exact time of the meetings is to the discretion of the host club.
- B. Election of Host Club.
1. The host club shall be selected from bids submitted by member clubs at each annual meeting by a roll call majority vote two years in advance.
  2. In case of tie, the president shall cast the deciding vote.
  3. No club shall be host more than once in three years.
  4. If a previously elected host notifies the members of the ASFC, by October 1 of the year before it is to hold the conclave, that it cannot hold the conclave, the president shall solicit bids from the members and then send a ballot to each member club to be voted on in writing.
  5. The host club shall be alternated from east to west whenever possible.

C. Files.

1. Accumulative files shall be maintained by the host club and shall include all member reports and correspondence.
2. Each file shall contain a copy of the ASFC Constitution.

Article VI. Amendments.

The constitution may be amended or revised by a two-thirds vote of the voting member clubs.

Article VII. Publications.

- A. Title. The title of the publication shall be "THE SOUTHERN FORESTER."
- B. The constitution shall be published annually in the publication of "THE SOUTHERN FORESTER."
- C. The past host club shall publish the ASFC periodical within one month after the Annual Conclave.
- D. Securing items for publications.
  1. The articles shall be edited by the member club and submitted to the host club.
  2. Article to be printed in the current issue must be in the hands of the publishing editor not later than the time of the Annual Conclave.
- E. Distribution.

Each conclave contestant will receive one (1) copy of "THE SOUTHERN FORESTER." A minimum of twenty (20) will be sent to participating member clubs.
- F. Proceedings of the Conclave.

Proceedings of each Annual Conclave, including minutes of the business meetings, will be published by the past host club in the annual publication.

Article VIII. Contests:

- A. Competitive events will be held at each Annual Conclave.
- B. There will be 15 standard competitive contests at each Annual Conclave.
  1. Standard events:
    - a. Dendrology
    - b. Compass and pacing
    - c. Timber estimation
    - d. D.B.H. estimation
    - e. Pole classification
    - f. Wood technology
    - g. Chain throwing
    - h. Axe throwing
    - i. Knife throwing
    - j. Pole climbing
    - k. Bow sawing
    - l. Log rolling
    - m. Cross-cut sawing
    - n. Log chopping
    - o. Bait casting

2. Scoring will be based on the number of schools participating in the Conclave. First place winners in field events will be awarded a number of points equal to the total number of schools participating. Second place winners will receive 1 less point than the total number of participating schools, third place winners will receive 2 less points than the total number of participating schools, and so on with each succeeding participant who satisfactorily completes the event receiving one or more points. First place winners in technical events will be awarded a number of points equal to the number of participating schools multiplied by 1.5. Second place winners will receive 1.5 points less than the total number of points awarded first place winners, third place winners will receive 3 points less than the total number of points awarded first place winners, and so on with each succeeding participant who satisfactorily completes the event receiving 1.5 or more points.
- C. In addition to the 15 standard events established in Section B, there may be a maximum of five (5) contests at the discretion of the host club, provided that these contests be specified with rules and explanations at the preceding Annual Conclave. Requests for omission of any standard contests will be made at the preceding Annual Conclave with a two-thirds (2/3) majority vote necessary for approval.
- D. The standard set of rules will be made and approved by the voting members of the ASFC.
- E. Selection of judges of all contests will be left to the discretion of the host club except in the event the host club participates; then judging will not be done by members of the host club.
- F. Only students presently enrolled in a school or department of forestry will be eligible to enter ASFC events. In the case of the University of Florida and the University of the South, freshmen and sophomore students presently enrolled and who have declared an intention of enrolling in the forestry department or school at the beginning of their junior year will also be eligible for participation.
- G. The contestant must meet the same requirements as are specified for individual participation in school athletics. The contestant must be an undergraduate student and he must meet his own school's requirements both scholastically and in credit for athletic participation.
- H. In the event that the Conclave delegation or spectators from any member school intentionally or otherwise interfere with the progress of any event in the Conclave, that delegation shall forfeit its rights to score any points in that event.
- I. VPI is hereby considered a member of the ASFC by vote taken on May 4, 1963.

- J. A table of random numbers will be used to choose order of team's participation in each event. This order will be sent to each participating school before the Conclave.
- K. Contest protests must be filed with a committee of staff members within fifteen (15) minutes of the individual infraction.
- L. Contestants in the log chopping event must wear hard-toed footwear; the use of shin guards is left to the individual's discretion.
- M. Tennessee is hereby considered a member of the ASFC by unanimous vote taken on April 8, 1967.

CONCLAVE SNAPSHOTS



CONCLAVE SNAPSHOTS

